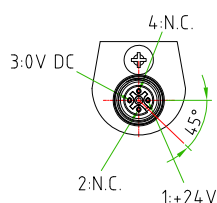
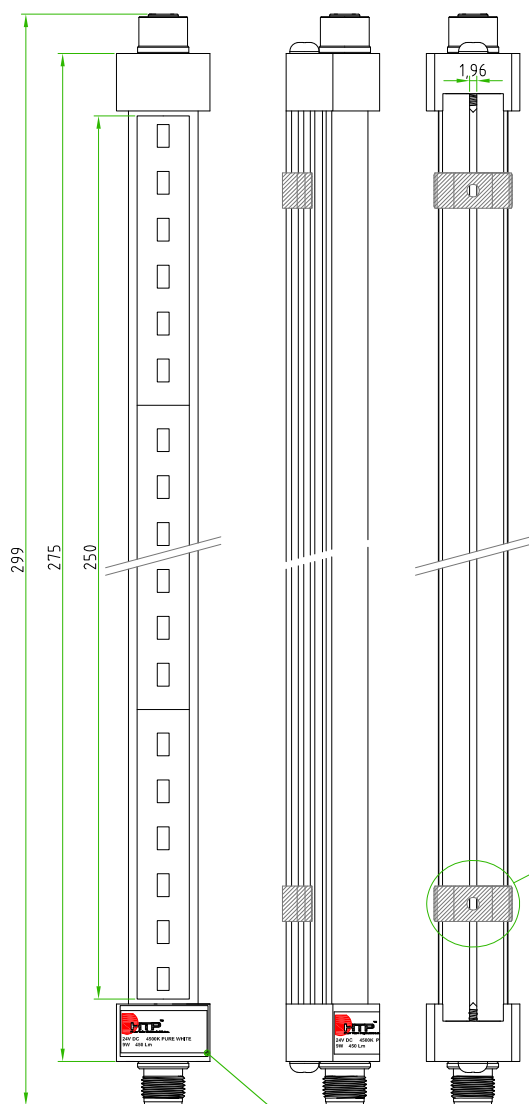
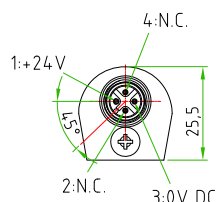


Rev.	Modify	Date	Signed	Approved

Rev.	Modify	Date	Signed	Approved

Rev.	Modify	Date	Signed	Approved
01	-	2017.03.29	SUGLIANI	CIMMINO



SILVER LABEL

ON THE LAMP (M12 MALE SIDE)
MUST BE APPLIED THIS
SILVER LABEL



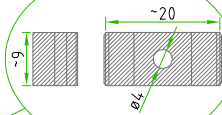
PACKAGING

THIS PRODUCT MUST BE ROLLED WITH PLURIBALL FOIL AND
MUST BE PACKED IN A SINGLE CARTON BOX COMPLETE OF CAPS

CODE:
CAPS 12-F-P

CODE:
CAPS 12-M-P

MOUNTING CLIPS
REV.01



ON THE LAMP MUST BE
APPLIED N°2 MOUNTING CLIPS



FEMALE	PIN #	
	1	+24 V
	3	0V DC
	2 / 4	NOT CONN.

MALE	PIN #	
	1	+24 V
	3	0V DC
	2 / 4	NOT CONN.

CUSTOMER APPROVAL

SIGNATURE

DATE

PLEASE SIGN
AND RETURN

LIGHTING FEATURES	PRODUCT TYPE	INDUSTRIAL LIGHTING
	INDUSTRIAL LIGHTING TYPE	LED LIGHT TUBE WITH M12 CONNECTORS
	TUBE DIAMETER	ø24,8mm
	LIGHTING LENGHT	250mm
	LIGHTCOLOUR	4500K PURE WHITE
	RATED VOLTAGE	24V DC
	RATED POWER	9W
	LUMINOUS FLUX	450lm
	MATERIALS	PLASTIC+ALLUMINIUM
	OPERATING TEMPERATURE	FROM -25°C TO +60°C
M12 FEATURES	PROTECTION CLASS	IP54
	CONNECTOR TYPE	M12 TO PANEL
	MOUNTING TYPE	FRONTAL
	CONTACT TYPE	MALE-FEMALE
	NUMBER OF CONTACTS	n°4
	NUMBER OF CONTACTS CONNECTED	n°2
	HOUSING MATERIAL	BRASS+NICKEL PLATED
	CONNECTOR WITHOUT ANY LOGO	

Designer	SUGLIANI R.	Date	2016-10-04	Tolerance	±0.3	Units:	mm	Series	INDUSTRIAL LIGHTING	Drawing n. 1-1
Approved	CIMMINO L.	Date	2016-10-04	Scale	1:1	Size:	A4	Customer code:		



DESCRIPTION

INDUSTRIAL LIGHTING,LED LIGHT TUBE WITH M12 CONNECTORS
MALE 4POLES AND FEMALE 4POLES TO PANEL,FRONTAL MOUNTING.
24V DC, IP54 ,LAMP LENGHT=250mm

H.T.P.PART NUMBER

LED-12FD-P0250-12MD

A4

