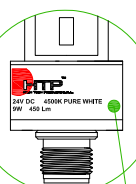
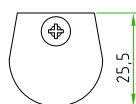
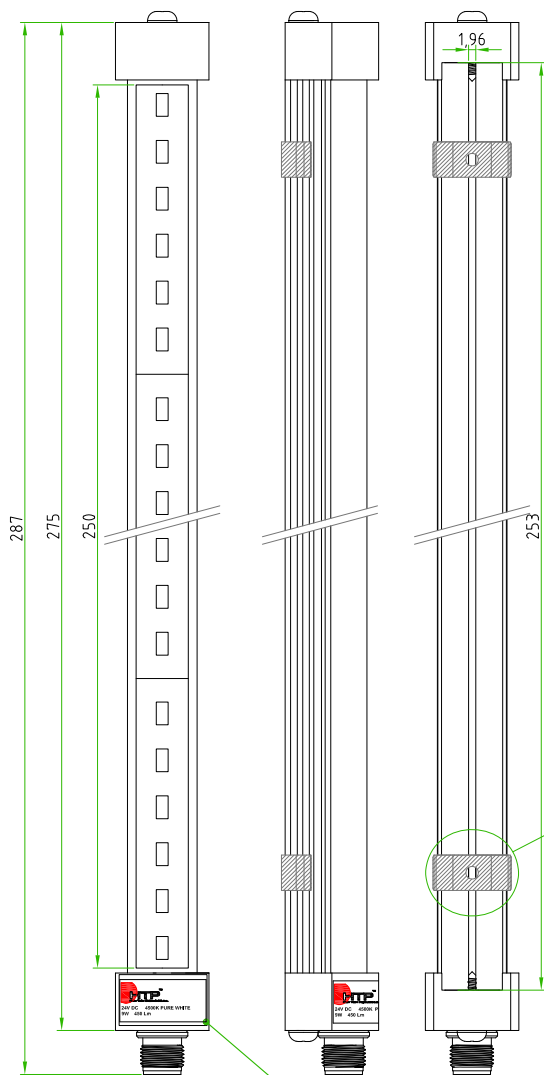
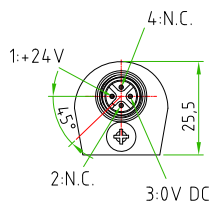


Rev.	Modify	Date	Signed	Approved

Rev.	Modify	Date	Signed	Approved

Rev.	Modify	Date	Signed	Approved
01	-	2017.03.29	SUGLIANI	CIMMINO



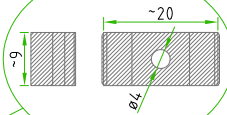
SILVER LABEL



PACKAGING

THIS PRODUCT MUST BE ROLLED WITH PLURIBALL FOIL AND MUST BE PACKED IN A SINGLE CARTON BOX COMPLETE OF CAP

MOUNTING CLIPS  
REV.01



ON THE LAMP MUST BE APPLIED N°2 MOUNTING CLIPS

CODE: CAPS-12-F-P

MALE	PIN #	
	1	+24V
	3	0V DC
	2 / 4	NOT CONN.



ON THE LAMP (M12 MALE SIDE) MUST BE APPLIED THIS SILVER LABEL



CUSTOMER APPROVAL

SIGNATURE

DATE

PLEASE SIGN  
AND RETURN

LIGHTING FEATURES	PRODUCT TYPE	INDUSTRIAL LIGHTING
	INDUSTRIAL LIGHTING TYPE	LED LIGHT TUBE WITH M12 CONNECTOR
	TUBE DIAMETER	ø24,8mm
	LIGHTING LENGHT	250mm
	LIGHTCOLOUR	4500K PURE WHITE
	RATED VOLTAGE	24V DC
	RATED POWER	9W
	LUMINOUS FLUX	450lm
	MATERIALS	PLASTIC+ALLUMINIUM
	OPERATING TEMPERATURE	FROM -25°C TO +60°C
M12 FEATURES	PROTECTION CLASS	IP54
	CONNECTOR TYPE	M12 TO PANEL
	MOUNTING TYPE	FRONTAL
	CONTACT TYPE	MALE
	NUMBER OF CONTACTS	n°4
	NUMBER OF CONTACTS CONNECTED	n°2
	HOUSING MATERIAL	BRASS+NICKEL PLATED
	CONNECTOR WITHOUT ANY LOGO	

Designer	SUGLIANI R.	Date	2016-10-04	Tolerance	±0.3	Units:	mm	Series	INDUSTRIAL LIGHTING	Drawing n. 1-1
Approved	CIMMINO L.	Date	2016-10-04	Scale	1:1	Size:	A4	Customer code:		



DESCRIPTION  
INDUSTRIAL LIGHTING,LED LIGHT TUBE WITH M12 CONNECTORS  
MALE 4POLES TO PANEL,FRONTAL MOUNTING.  
24V DC ,IP54 ,LAMP LENGHT=250mm

H.T.P.PART NUMBER

LED-P0250-12MD

A4

