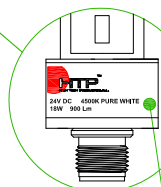
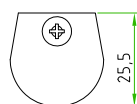
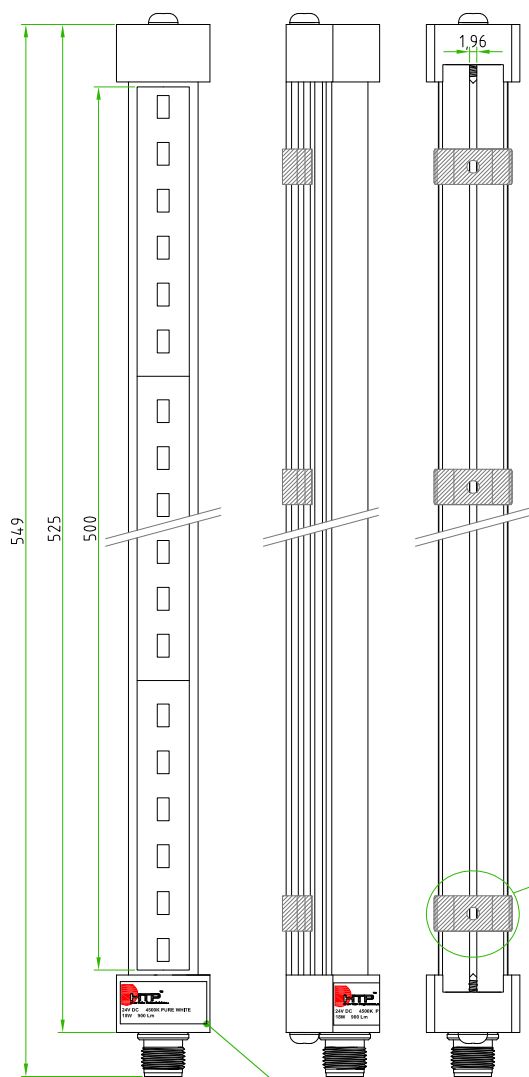
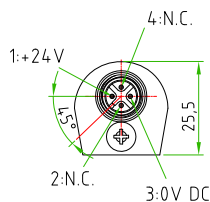


Rev.	Modify	Date	Signed	Approved

Rev.	Modify	Date	Signed	Approved

Rev.	Modify	Date	Signed	Approved
01	-	2017.03.29	SUGLIANI	CIMMINO



SILVER LABEL

LIGHTING FEATURES	PRODUCT TYPE	INDUSTRIAL LIGHTING
	INDUSTRIAL LIGHTING TYPE	LED LIGHT TUBE WITH M12 CONNECTORS
	TUBE DIAMETER	ø24,8mm
	LIGHTING LENGHT	500mm
	LIGHT COLOUR	4500K PURE WHITE
	RATED VOLTAGE	24V DC
	RATED POWER	18W
	LUMINOUS FLUX	900lm
	MATERIALS	PLASTIC+ALLUMINIUM
	PROTECTION CLASS	IP54
M12 FEATURES	OPERATING TEMPERATURE	FROM -25°C TO +60°C
	CONNECTOR TYPE	M12 TO PANEL
	MOUNTING TYPE	FRONTAL
	CONTACT TYPE	MALE
	NUMBER OF CONTACTS	n°4
	NUMBER OF CONTACTS CONNECTED	n°2
	HOUSING MATERIAL	BRASS+NICKEL PLATED
CONNECTOR WITHOUT ANY LOGO		



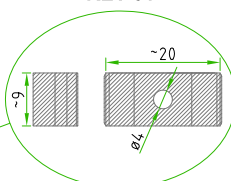
PACKAGING

THIS PRODUCT MUST BE ROLLED WITH PLURIBALL FOIL AND MUST BE PACKED IN A SINGLE CARTON BOX COMPLETE OF CAP



CODE: CAPS-12-F-P

MOUNTING CLIPS
REV.01



ON THE LAMP MUST BE APPLIED N°3 MOUNTING CLIPS

MALE	PIN #	
	1	+24V
	3	0V DC
	2 / 4	NOT CONN.



ON THE LAMP (M12 MALE SIDE) MUST BE APPLIED THIS SILVER LABEL



CUSTOMER APPROVAL

SIGNATURE

DATE

PLEASE SIGN
AND RETURN

Designer	SUGLIANI R.	Date	2016-10-04	Tolerance	±0.3	Units:	mm	Series	INDUSTRIAL LIGHTING	Drawing n. 1-1
Approved	CIMMINO L.	Date	2016-10-04	Scale	1:1	Size:	A4	Customer code:		



DESCRIPTION

INDUSTRIAL LIGHTING, LED LIGHT TUBE WITH M12 CONNECTORS
MALE 4 POLES TO PANEL, FRONTAL MOUNTING.
24V DC, IP54, LAMP LENGTH=500mm

H.T.P. PART NUMBER

LED-P0500-12MD

