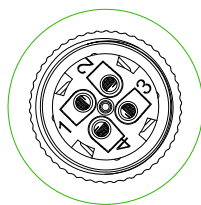


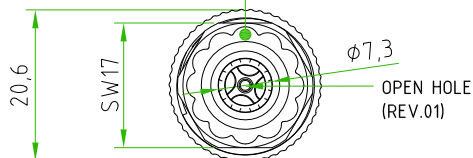
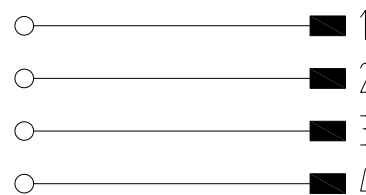
| | | | | |
|------|--------|------|--------|----------|
| Rev. | Modify | Date | Signed | Approved |
| | | | | |

| | | | | |
|------|--------|------|--------|----------|
| Rev. | Modify | Date | Signed | Approved |
| | | | | |

| | | | | |
|------|--------|------------|------------|-------------|
| Rev. | Modify | Date | Signed | Approved |
| 01 | - | 2019-05-27 | CIMMINO L. | SUGLIANI R. |
| 02 | - | 2021-04-27 | CIMMINO L. | SUGLIANI R. |

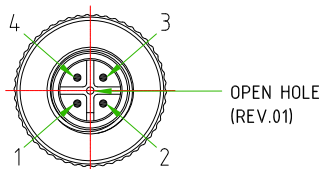
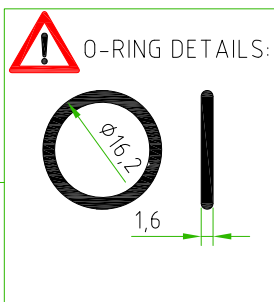
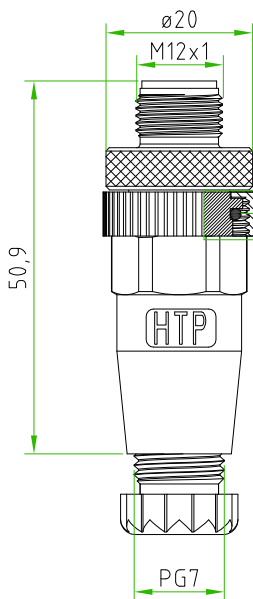


!
ON THE INTERNAL CORE
MUST BE SILK PRINTED
THE CONTACTS NUMBERS



OPEN HOLE
(REV.01)

REV.02



OPEN HOLE
(REV.01)

| | |
|-------------------------------|---|
| PRODUCT TYPE | M12 CIRCULAR CONNECTOR FIELD ATTACHABLE |
| CONNECTOR TYPE | STRAIGHT 180° |
| HOUSING MATERIAL/COLOUR | PA66+30%GF/BLACK |
| PRESS-CABLE MATERIAL/COLOUR | PA66/BLACK |
| INTERNAL CORE MATERIAL/COLOUR | PA66/BLACK |
| M12 COUPLING NUT MATERIAL | BRASS + NICKEL PLATED |
| CONTACTS TYPE | MALE SCREW CONTACTS |
| NUMBER OF POLES | 4POLES (5HOLES REV.01) |
| CABLE EXIT | PG7 |
| SUITABLE CABLE | FROM ø4mm TO ø6mm |
| MAX.CONDUCTOR SIZE | 0,75mm ² (AWG18) |
| PROTECTION CLASS | IP67 |
| RATED VOLTAGE | 250V AC/DC |
| RATED CURRENT | 4A |
| CONNECTOR TEMPERATURE RANGE | from -40°C to +90°C |
| SEAL MATERIAL | PVC |
| CONNECTOR WITH H.T.P. LOGO | |

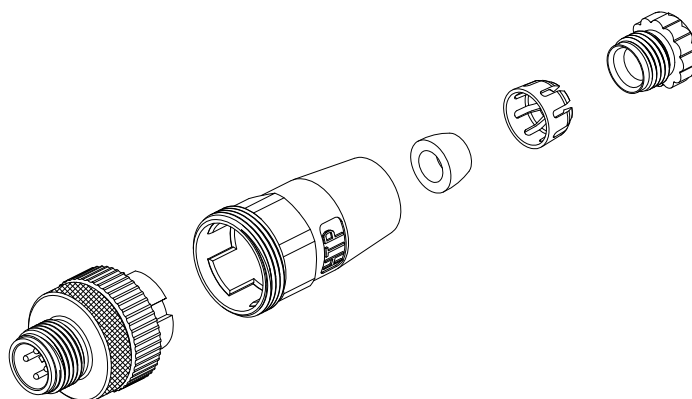
CONNECTOR FEATURES

! PACKAGING:
SINGLY PACKED IN THE PLASTIC BAG
(PLASTIC BAG WITHOUT ANY LOGO AND LABEL)

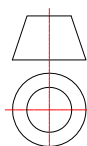
CUSTOMER APPROVAL

| | |
|-----------|------|
| SIGNATURE | DATE |
| | |

PLEASE SIGN AND RETURN



A4



| | | | | | | | | | | |
|----------|-------------|------|------------|-----------|------|--------|----|----------------|-----|------------|
| Designer | SUGLIANI R. | Date | 2018-09-11 | Tolerance | ±0.3 | Units: | mm | Series | M12 | Drawing n. |
| Approved | CIMMINO L. | Date | 2018-09-11 | Scale | 1:1 | Size: | A4 | Customer code: | | |

| | | |
|--|--|---------------------------------------|
| | DESCRIPTION CIRCULAR CONNECTOR M12 FIELD ATTACHABLE, MALE, STRAIGHT 180°, 4POLES, PG7 EXIT CABLE. CONNECTOR WITH H.T.P. LOGO | H.T.P. PART NUMBER 12MC4000 |
|--|--|---------------------------------------|